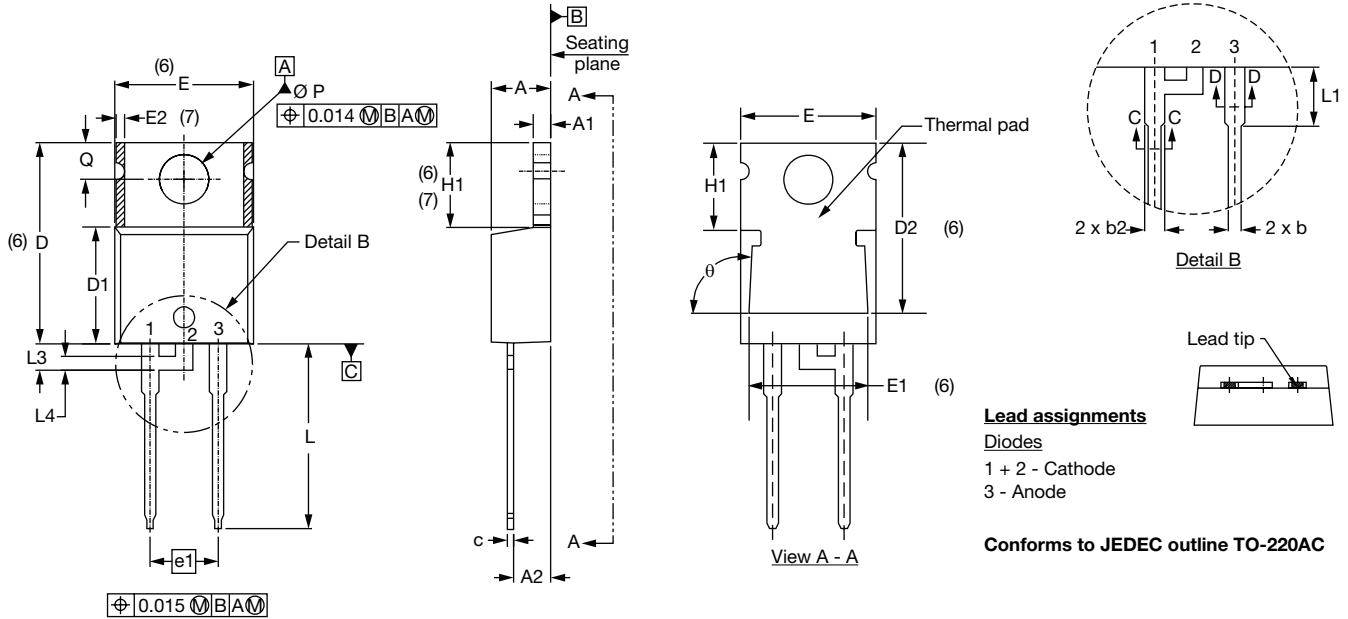


## TO-220AC, TO-220AC FULL-PAK

**DIMENSIONS FOR TO-220AC** in millimeters and inches



SYMBOL	MILLIMETERS		INCHES		NOTES	SYMBOL	MILLIMETERS		INCHES		NOTES
	MIN.	MAX.	MIN.	MAX.			MIN.	MAX.	MIN.	MAX.	
A	3.56	4.83	0.140	0.190		E	9.65	10.67	0.380	0.420	3, 6
A1	0.51	1.40	0.020	0.055		E1	6.86	8.89	0.270	0.350	6
A2	2.03	2.92	0.080	0.115		E2	-	0.76	-	0.030	7
b	0.38	1.01	0.015	0.040		e	2.54 BSC		0.100 BSC		
b1	0.38	0.97	0.015	0.038	4	e1	5.08 BSC		0.200 BSC		
b2	1.14	1.78	0.045	0.070		H1	5.84	6.86	0.230	0.270	6, 7
b3	1.14	1.73	0.045	0.068	4	L	12.70	14.73	0.500	0.580	
c	0.36	0.61	0.014	0.024		L1	3.55	3.96	0.140	0.150	2
c1	0.36	0.56	0.014	0.022	4	L3	1.78	2.13	0.070	0.084	
D	14.22	16.51	0.560	0.650	3	L4	0.76	1.27	0.030	0.050	2
D1	8.38	9.02	0.330	0.355		∅ P	3.53	3.73	0.139	0.147	
D2	11.68	12.88	0.460	0.507	6	Q	2.54	3.05	0.100	0.120	

**Notes**

- (1) Dimensioning and tolerancing as per ASME Y14.5M-1994
- (2) Lead dimension and finish uncontrolled in L1
- (3) Dimension D, D1 and E do not include mold flash. Mold flash shall not exceed 0.127 mm (0.005") per side. These dimensions are measured at the outermost extremes of the plastic body
- (4) Dimension b1, b3 and c1 apply to base metal only
- (5) Controlling dimension: inches
- (6) Thermal pad contour optional within dimensions E, H1, D2 and E1
- (7) Dimension E2 x H1 define a zone where stamping and singulation irregularities are allowed
- (8) Outline conforms to JEDEC TO-220, D2 (minimum) where dimensions are derived from the actual package outline

# Outline Dimensions



Vishay High Power Products

TO-220AC,  
TO-220AC FULL-PAK

## DIMENSIONS FOR TO-220AC FULL-PAK in millimeters

